



K E M Hospital Research Centre (KEMHRC), Pune Internship / Observer-ship program

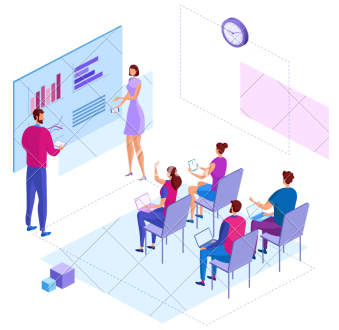


Background

KEMHRC, being a multidisciplinary research centre has capacity to host students through its various departments to gain knowledge of Research on basic, Clinical Trials, applied, socio-behaviour and operation research or clinical research during the Observer ship / internship training period. The centre supports students from outside KEMHRC in their academics for Observer-ship / Internship training, who may use our facilities with mutual understanding after signing a MoU with their respective institutes.

Course Highlights

- 1) Good Clinical Practice (GCP) from study start up activities to end of the study as per current applicable laws, regulations and guidelines issued by the competent regulatory or health authorities in India
- 2) Deep understanding of Ethics Committee related activities
- 3) Guidance from Experts in various research fields
- 4) Technical guidance and assistance
- 5) Gain Industry Standard Knowledge of Clinical Trials and research related activities
- 6) Tracking of monthly progress
- 7) Pre & Post Assessment to assess the knowledge
- 8) Full time with capping of 95% attendance



Procedure for undertaking Internship & Observer-ship program

For Students

Students are welcome to apply directly for internship & Observer-ship program after completion of PGDCR course

Approach: Please send a request mail to Internship@kemhrcpune.org & director@kemhrcpune.org with cover letter & academic details.

KEMHRC will let you know after completing the internal procedure of shortlisting



For Institutes

Approach : Institutes need to send a request mail to Internship@kemhrcpune.org & director@kemhrcpune.org with detailed information seeking initial permission.

Students' application : After initial communication, the institutes are requested to submit the list of recommended students and their application to KEMHRC, Pune

Memorandum Of Understanding (MOU) : A MOU is to be signed between approaching Institute and KEMHRC, Pune.



Course Fees

A Non-refundable amount of **INR. 10,000/- (+GST 18%)** per student per program of 3 months course collected.

